

galicia

Natural Parks of Galicia
Complexo dunar de Corrubedo
e lagoas de Carregal e Vixán

*Experiences
in the midst
of nature*

A unique mobile dune



THE BIGGEST DUNE OF GALICIA

The Nature Reserve extends over 1000 hectares of land in the borough of Ribeira. The immense and spectacular mobile dune, which overlooks A Ladeira beach, is the Reserve's main attraction. In order to protect it, public access to the dune is forbidden.

Visitors can also discover the Arousa and Muros and Noia rías (coastal inlets). As well as the dunes, A Ladeira and O Vilar beaches are well worth visiting, as are the Vixán freshwater lake and the Carregal saltwater lake.

Other places we recommend visiting are the Pedra da Rá

and Castro da Cidá vantage points and the megalithic dolmen in Axeitos. 20 km north of the Reserve lies the Castro de Baroña, the best preserved hill fort settlement in Galicia. Ribeira port is Spain's most important inshore fishing port and we would recommend a visit to the fish market to watch an auction and see the fish being unloaded when the boats return to port.


In recent years, the town of Corrubedo has become an ideal place to relax and spend some time by the sea, surrounded by nature.



ACCESS:

The most common way of reaching the Natural Park is via the A-9 motorway to Padrón, and then to take the AG-11 following the signs for the protected area. Another option is to take the AC-550 road between Ribeira and Noia.





**FIND OUT MORE ABOUT THE PARK AND
PROPOSED EXPERIENCES AT:**

**Casa da Costa Visitor Reception Centre / Galicia Coastal
Ecosystems Interpretation Centre
(CIELGA)**



Lugar do Vilar, Carreira. 15960 Ribeira
T. 981 878 532

The chance to explore the park is within everyone's reach.



ACCESSIBLE CORRUBEDO

The best way to discover the Park is on foot. There are several easy and totally accessible routes. From the Reception Centre, visitors can choose to follow the Camiño da Praia (Beach Trail) or the Camiño da Gandarela, (A Gandarela Trail), which leads to Carregal lake. If you would like to see the Vixán lake, take the Camiño del Agua (Water Trail) which starts at the beach car park; this trail is partially suitable for people with limited mobility.

				
Camiño do Vento	LOW	1,5 km	30 min	LINEAR
Camiño do Río do Mar	LOW	3,5 km	1,30 h	LINEAR
Camiño da Praia	LOW	1,5 km	45 min	CIRCULAR
Camiño da Gandarela	LOW	6 km	2 h	CIRCULAR
Camiño da Auga	LOW	2,5 km	2 h	CIRCULAR



A bird-watcher's paradise all year round.



CORRUBEDO BIRDING

Corrubedo is an ornithological paradise well worth discovering. It is an important breeding ground and wintering area for migratory birds which can be visited all year round. The Park is host to coastal habitats such as beaches, rocky shores, marshland and dunes; and birds can also be seen inland in areas of woodland, farmland, pools and scrubland. At the Vixán lake there is a bird observatory where beginners can take up bird-watching. The best time of year for this activity is between September and April. Having said this, in

winter a large number of water birds use the lakes to rest and feed.

Ducks, cormorants, European golden plovers, grey herons and swans are among the most notable species. Download the free Birding Galicia app and enjoy the three routes it suggests, two of which are by car and the third suitable for walking and cycling.



Visit the vantage points for a great view of the dunes from above.



CORRUBEDO FROM THE AIR

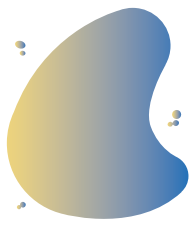
Aquiño offers the vantage point known as Pedra da Rá, from where you enjoy the best view of the dunes as well as the mouth of the Arousa ría and the area's different towns, such as A Pobra do Caramiñal, Corrubedo and its famous lighthouse, as well as Sálvora Island.

If we follow the dirt trail that lies to its right, we come to another vantage point called O Castro da Cidá, which is 210 m above sea level and is the remains of a hill fort settlement. Another spectacular vantage point is to be found near A

Pobra do Caramiñal, known as A Curota, rising 500 m above sea level. After leaving the car, we have to climb a series of stone steps, but it is more than worth the effort, as the views of the Reserve, the Muros and Noia ría and the Arousa, Cíes and Sálvora Islands are absolutely spectacular.







Parques
Naturais
de Galicia

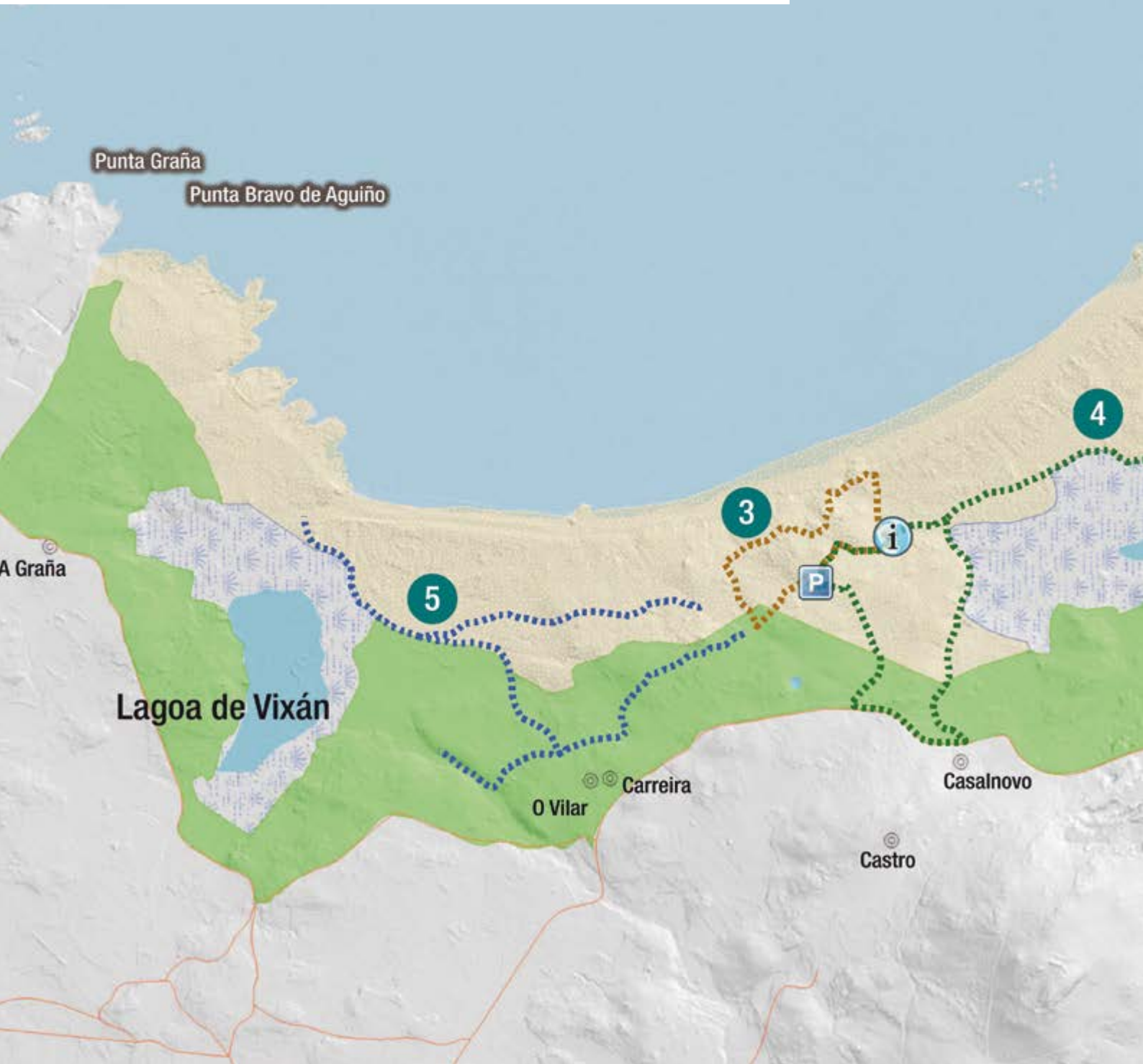
Complexo dunar de Corrubedo e lagoas de Carregal e Vixán

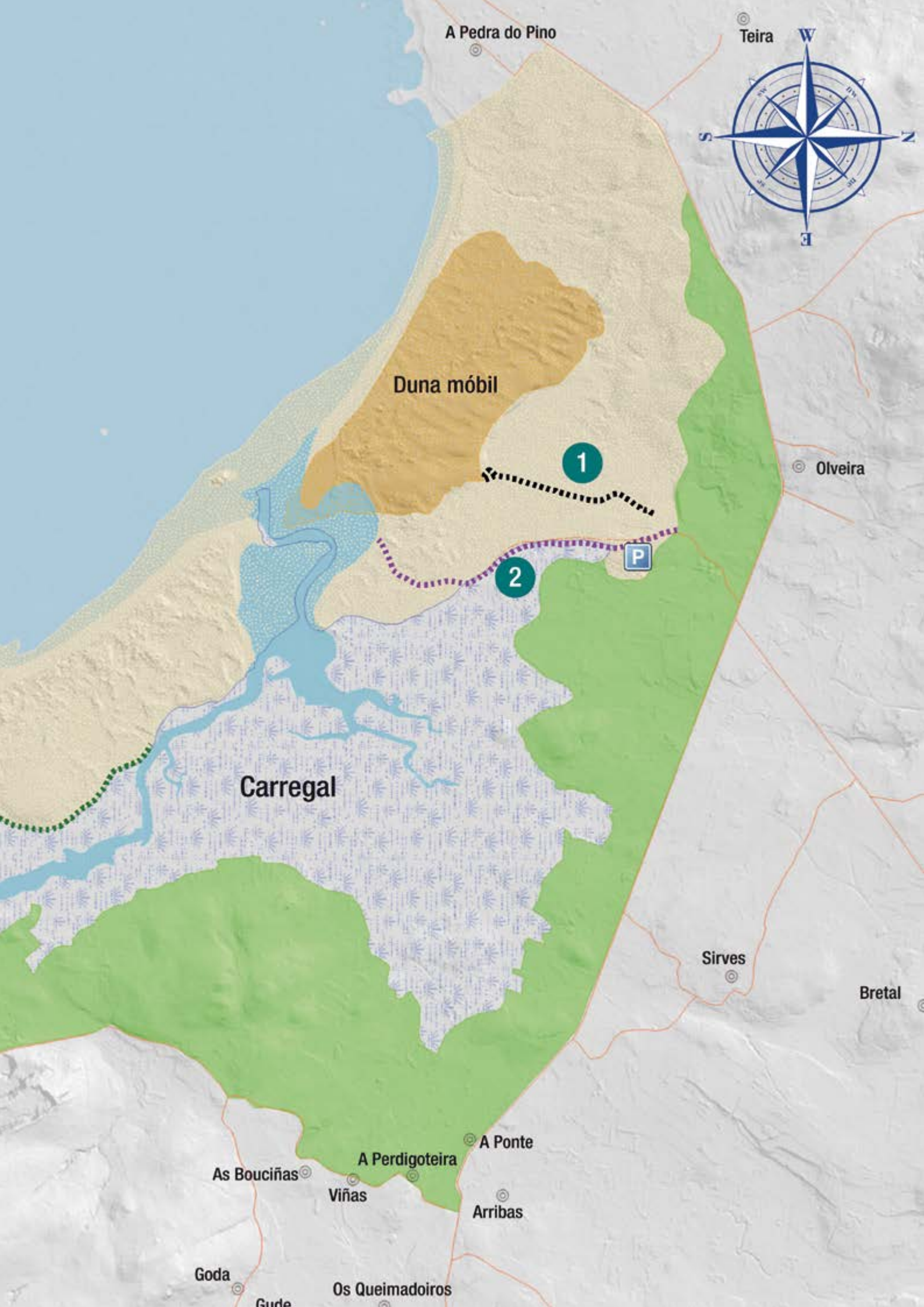
RUTAS

- 1 Camiño do Vento
- 2 Camiño do Río do Mar
- 3 Camiño da Praia
- 4 Camiño da Gandarela
- 5 Camiño da Áuga

ZONIFICACIÓN P.O.R.N.

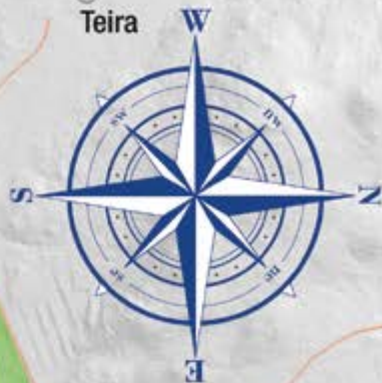
-  Duna móbil
-  Lagoa e Marismas
-  Área Litoral
-  Zona perimetral





A Pedra do Pino

Teira



Duna móbil

1

Olveira

P

2

Carregal

Sirves

Bretal

A Ponte

As Bouciñas

A Perdigoteira

Viñas

Arribas

Goda

Gude

Os Queimadoiros

Tourist packages



Welcome to the authenticity of Corrubedo

Sherpa Project, a specialist tourism consultancy, has chosen some of the best experiences to make your journey unforgettable. **Through Viajes Tambre - Aventuras en Galicia**, you can book the programmes we offer.

Make yourself the focal point of your tourism experience or look for more information on other tourism services in contact with nature on the Turismo de Galicia web site.

General conditions for tourist packages:

- * The prices indicated are per person in a double room with dinner and breakfast and VAT is included in all services.
- * Offer subject to availability and the season of the year.
- * Some activities might require a minimum number of participants.

Further information and bookings:

info@aventurasengalicia.com · T. 981 561 785

2-DAY PROGRAMMES IN CORRUBEDO

Corrubedo from the sea



Interpretive boat tour.
Overnight stay in a rural house.

Sail along the Muros and Noia ría, reaching the Reserve from the sea.

On board one of the company Mar de Aguiño's vessels, visitors will have the opportunity of seeing how barnacles are picked and mussels farmed on the floating platforms known as "bateas". These are just two of Galicia's most treasured gastronomic delights.

The boat trip includes a visit to the Reserve, Corrubedo lighthouse, Baroña hill fort settlement, Porto do Son

and the Muros and Noia ría. A perfect family experience, recommended in summer and when the sea conditions are favourable.

DINNER + 1 NIGHT ACCOMMODATION + BREAKFAST + BOAT TRIP.

Price from 90€/person.

Check tourist package terms and conditions.



2-DAY PROGRAMMES IN CORRUBEDO

In search of shorebirds



Guided ornithological visit.
Overnight stay in a rural house.

Corrubedo has everything: from beaches to be enjoyed the year round to that one bird still missing from your travel journal.

Enjoy an experience that allows you to be at one with an environment unknown up until now. Tucked away in the observation post at Vixán lake, armed with telescope and binoculars and in the company of an expert guide, you can observe a large variety of species. Then spend the night in a traditional rural house and wake up refreshed to enjoy the day visiting the Reserve.

DINNER + 1 NIGHT ACCOMMODATION + BREAKFAST + BIRD-WATCHING ROUTE.

Price from 85€/person.

Check tourist package terms and conditions.



2-DAY PROGRAMMES IN CORRUBEDO

Paddling to the sound of the waves



Paddle boarding route.
Overnight stay in a rural house.

Paddle to Corrubedo from the sea and discover its coastline.

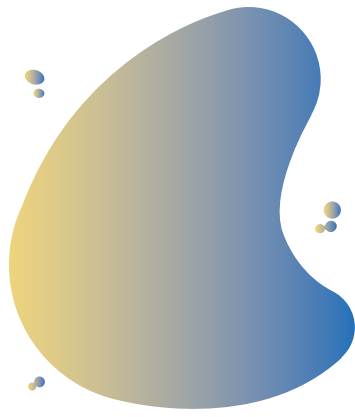
The Reserve's coastline is an exceptional and ideal place for paddle boarding, and with the dune as a backdrop, this is a unforgettable experience and way to explore the coast close-up. We depart from the harbour in Corrubedo and are accompanied by an expert guide at all times. We can also paddle to shore and visit the dune and the lakes, as well as follow any of the trails.

DINNER + 1 NIGHT ACCOMMODATION + BREAKFAST + PADDLE BOARD ROUTE.

Price from 105€/person.

Check tourist package terms and conditions.





Do not miss

A selection of four highly recommended visits which will not leave you indifferent and which embody the essence of Corrubedo Nature Reserve.

The dune

Walking across this extensive dune along the Camiño do Vento (Wind Trail) stirs up emotions that can only help us fully comprehend the environmental value and magnificence of this immense mountain of sand.



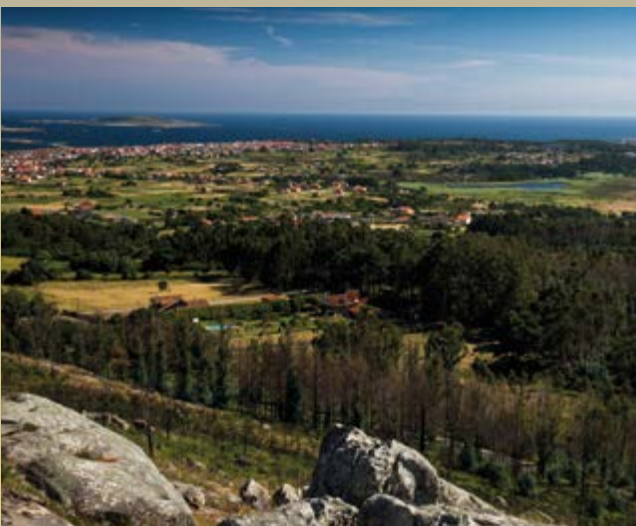
The lakes

A visit to the lakes will help us understand the effects of the dune system that cut off the fresh water from Vixán lake and joined the salt water of Carregal lake to the sea.



Pedra da Rá

At the top of Monte Castro (Aguiño), take all the time you need to enjoy the view from the vantage point built from stone in the shape of a frog.



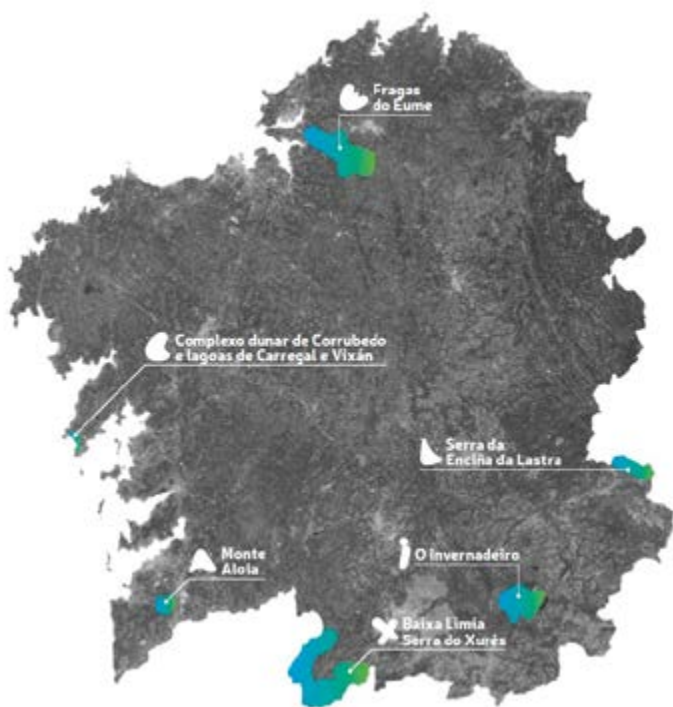
The Nature Reserve's beaches

Walk along more than 5 km of the sandy beaches of A Ladeira and O Vilar. Have a swim in the Atlantic ocean.



Obtain the Natural Parks of Galicia passport

Find out about the advantages it offers and follow us at: [#GaliciaNaturaleÚnica](#)



Parques Naturais de Galicia | Serra da Enciña da Lastra

The holm oak, a tree typical of Mediterranean climates, and its 25 different species of orchid have made this Park exceptional within the Galician landscape. It is well known to speleology lovers, given the number of caves known here as 'palas'.



Parques Naturais de Galicia | Baixa Limia Serra do Xurés

Galicia's largest Natural Park, which also forms part of the border with Portugal. Rugged granite mountains and magnificent stone boulders make it different from other protected areas. It also has many megalithic monuments and bears witness to the passage of the Roman legions along the XVIII road, also known as Via Nova.



Parques Naturais de Galicia | Monte Aloia

Galicia's first Natural Park to undergo tailored reforestation at the hands of the engineer Rafael Areses. Legend has it that this is Monte Medulio, the scene of the collective suicide of Celtic tribes in order to avoid falling into the hands of the Roman invaders.



Parques Naturais de Galicia | Fragas do Eume

The best-preserved Atlantic coastal forest in Europe. The River Eume and the Caaveiro and Monfero monasteries are its main attractions. A magical forest which hides more than 20 species of fern and 200 species of lichens on its humid riverbanks.



Parques Naturais de Galicia | O Invernadeiro

A natural area with no human settlements in the immediate surroundings. Nature in its wildest state represented by the wolf, which lives alongside its main prey, such as roe deer and boars. Its rounded peaks share a space with a surprising glacial cirque and spectacular waterfalls.

RECOMMENDATIONS

- Vehicles should be left in authorised car parks.
- Picking flowers and plants is forbidden. It endangers unique species.
- Before setting off on a trail, check the level of difficulty and the time required.
- Many of the Natural Parks organise free guided interpretation tours. Please call beforehand.
- Only use the authorised paths.
- Unauthorised camping and overnight caravan parking is forbidden.
- Treat waste responsibly. If there are no bins, take your waste with you until you find one.
- Swimming in unauthorised areas is forbidden.

Free apps:



Sendegal
Parques naturais
Birding galicia

EMERGENCY SERVICES

Emergencies 112
Seprona 062
Forest fires 085



www.turismo.gal



EUROPEAN REGIONAL
DEVELOPMENT FUND
"A way to build Europe"



Parques
Naturais de Galicia



XUNTA
DE GALICIA



Restaurants · Restaurants

PORTOVELLO 4ª Cat. ↓
Praza Parque García Bayón, 63, Ribeira (Santa Uxía), 15960, Ribeira
T. 981 872 647

POLÍGONO 4ª Cat. ↓
Polígono, 7, Artes, 15960, Ribeira
T. 981 872 775

BRASERÍA CAL DE RAMOS 4ª Cat. ↓
Porto do Son, 15979
T. 981 853 387

XANXO 4ª Cat. ↓
O Xobre ou O Maño (Santa María), 46-48, A Devesa, 15940, A Pobra do Caramiñal
T. 981 830 428

MOURATO 4ª Cat. ↓
Avda. da Coruña, 70 Baixo, 15960, Ribeira
T. 981 066 655

NOJIRA 4ª Cat. ↓
Paseo do Areal, 3, 15940, A Pobra do Caramiñal
T. 981 832 364

O CAMPIÑO 4ª Cat. ↓
Mirandela, 1, O Xobre ou O Maño (Santa María), 15940, A Pobra do Caramiñal
T. 981 832 686

PRAIA DO VILAR 4ª Cat. ↓
Carreira (San Paio), O Vilar, 15960, Ribeira
T. 981 878 982

MESÓN PARRILLADA CAPITÁN MORGAN 4ª Cat. ↓
Rúa do Sal, 2, 15960, Ribeira

O SECRETO 4ª Cat. ↓
Fonte, 68, Corrubedo (Santa María), 15960, Ribeira
T. 981 865 167

O NOSO BAR 4ª Cat. ↓
Goiáns (San Sadurniño), O Mariño, 15999, Porto do Son
T. 629 302 567

CASA VILAS 4ª Cat. ↓
Olveira (Santa María), 60, Bretal, Ribeira
T. 981 865 615

O MALECÓN 4ª Cat. ↓
Díaz de Rábago, 22, 15940, A Pobra do Caramiñal
T. 981 830 455

PORTO NADELAS 4ª Cat. ↓
Avda. de Galicia, 6, Noal (San Vicente), 15970, Porto do Son,
T. 981 854 007

A DE ROSA 4ª Cat. ↓
Díaz de Rábago, 34, 15940, A Pobra do Caramiñal
T. 981 832 816

XAQUÍN 4ª Cat. ↓
Praza Compostela, 8, 15960, Ribeira,
T. 981 874 143
reservas@restaurantexaquin.com
www.restaurantexaquin.com

O RISÓN 4ª Cat. ↓
Avda. de Galicia, 78, 15970, Porto do Son
T. 981 767 533

A NOSA TERRA 4ª Cat. ↓
Díaz de Rábago, 11, 15940, A Pobra do Caramiñal
T. 981 832 569

CASA HERMO 4ª Cat. ↓
Lixó, 5, 15963, Ribeira
T. 981 767 899

MESÓN CARIBE 4ª Cat. ↓
Avda. de Galicia, 3 Baixo, Noal (San Vicente), 15970, Porto do Son

LUARADA 4ª Cat. ↓
Praza porta do Sol, 8, Ribeira (Santa Uxía), 15960, Ribeira
T. 881 124 220

CLUB NÁUTICO PORTOSÍN 4ª Cat. ↓
Porto Deportivo, s/n, Goiáns (San Sadurniño), 15999, Porto do Son
T. 981 766 050

A TERRAZA DE CHICOLINO 4ª Cat. ↓
Castelao, 7-9, 15940, A Pobra do Caramiñal
T. 981 830 267
reservas@aterrazadechicolino.es
www.aterrazadechicolino.es

ÁNCORA DA RÍA 4ª Cat. ↓
Trincherpe, 16, 15970, Porto do Son
T. 981 767 443
pensionrestauranteancoradaria@gmail.com
www.ancoradaria.com

A QUEIMADA 4ª Cat. ↓
Praza Maura, 15940, A Pobra do Caramiñal
T. 981 831 666

MESÓN TÍO PEPE 3ª Cat. ↓↓
Paseo Das Carolinas, 34, Ribeira (Santa Uxía), 15960, Ribeira
T. 981 874 692

O PASEO S.L. 3ª Cat. ↓↓
Praia De Coroso, 15960, Ribeira

EL GOURMET DE ALJAN 3ª Cat. ↓↓
Miguel Rodríguez Bautista, 15-17, Ribeira (Santa Uxía), 15960, Ribeira
T. 981 875 334

ANEXO COIRA 3ª Cat. ↓↓
Paseo De Coira, 30, 15970, Porto do Son
T. 981 766 795

EL RINCÓN DE BASELA 4ª Cat. ↓
Escorial, 12, 15960, Ribeira
T. 636 137 765

HÓRREO 4ª Cat. ↓
Felipe III, 25-Baixo, 15970, Porto do Son
T. 981 767 215

FARO DE SALVORA 4ª Cat. ↓
Porto, 9, Aguiño (Nosa Señora do Carne), 15965, Ribeira
T. 981 841 581

O PARQUE DE ATRÁS 4ª Cat. ↓
Galicia, 99, 15960, Ribeira
T. 981 874 808
mariapouso@gmx.es

CASA DOTELLA E ROSALIA 4ª Cat. ↓
Praza Do Curro, 6, 15999, Porto do Son
T. 981 766 529
casadotella@gmail.com



Turismo activo e deportivo · Turismo activo y deportivo · Active and sports tourism

TURISMO DEPORTIVO · ACTIVE TOURISM

CLUB NAUTICO CARAMIÑAL
San Lázaro Urbanización Punta Salera, s/n, O Caramiñal (Santa María a Antiga), 15940, A Pobra do Caramiñal
T. 981 877 317

CLUB NÁUTICO PORTOSÍN
Porto Deportivo, s/n, Goiáns (San Sadurniño), 15999, Porto do Son
T. 981 766 583
info@rcnportosin.com
www.rcnportosin.com

CLUB NAUTICO DE RIVEIRA
Praza da Lonxa, s/n, Ribeira (Santa Uxía), 15960, Ribeira
T. 981 874 739

nautico@riveira.net
www.nauticoriveira.com

GOMON VOLADOR, S.L.
Pedra Daiga, 25, Palmeira (San Pedro), 15950, Ribeira
T. 981 838 350

HIDRONAUT@
Edificio Club Náutico, Ribeira (Santa Uxía), 15159, Ribeira
T. 981 875 286
buceo@hydronauta.com
www.hydronauta.com

NALU PROCENTER SL
Nebrá (Santa María), Cans, 15978, Porto do Son
info@nalu.es
www.nalu.es

DINÁMICA- ORGANIZACIÓN DE EVENTOS
Praza do Concello, P. 4B-Entrs.1, 15960, Ribeira

GESTIÓN EURITMIA, S.L.
San José, 1, 15999, Porto do Son

MAR DE AGUIÑO
A Graña, 21 B, Carreira (San Paio), Ribeira

Turismo de Galicia



www.turismo.gal